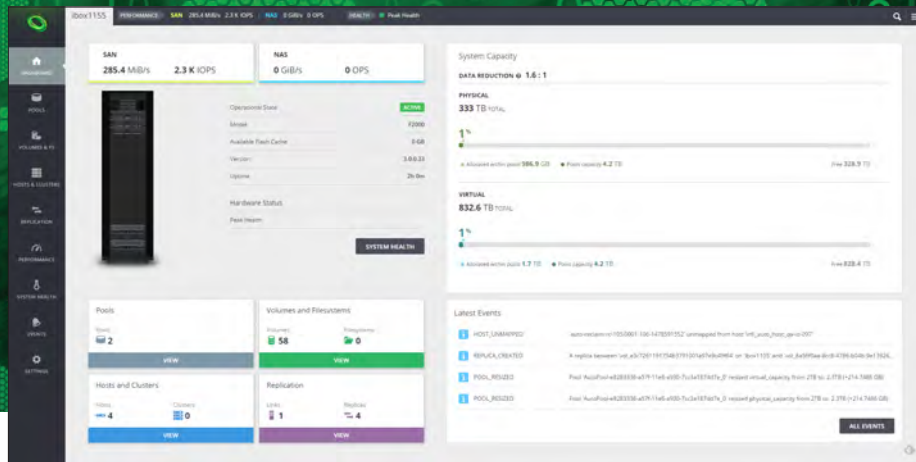


# INFINIDAT

# InfiniBox



The GUI Dashboard for InfiniBox

The InfiniBox™ storage array is based on an innovative software platform built on top of industry standard hardware. InfiniBox features predictable high performance, scalability to multiple petabytes in a single 42U rack, 99.99999% uptime, and unmatched TCO for mission-critical workloads. With InfiniBox, organizations can lower both the cost and complexity of their storage operations.



## Performance

InfiniBox features an efficient data distribution architecture that uses all drives all the time. This architecture not only delivers extremely high throughput, but also enables quick recovery from any component failure without impacting any system characteristics including performance or reliability.



## Reliability

Designed from the ground up for unmatched reliability, InfiniBox's self-healing architecture with InfiniRAID™ delivers 99.99999% uptime. InfiniBox's industry-leading snapshot and replication engine provides space-efficient snapshots and an ultra-fast replication.



## Simple and Powerful Management

An intuitive HTML5 GUI simplifies the most complex storage management operations. InfiniBox uses predictive analytics to ensure performance and availability. An elegant RESTful API and powerful CLI automate complex tasks. The result is an enterprise storage system that enables efficiency and is simple to manage.



## Multi-petabyte Scale

Models range from 115TB to multiple petabytes of capacity in a single standard 42U rack. System capacity utilization is maximized with extremely efficient thin provisioning, space reclamation and other storage efficiency capabilities such as inline data compression. With compression, InfiniBox can scale to over 5PB of effective capacity.



## Truly Unified Storage

Adapt to changing business needs by taking advantage of FC/iSCSI SAN, NAS, and Mainframe protocols in a single, common platform. Each of these protocols are built into InfiniBox's DNA, and managed consistently through a single, simple and powerful management interface.



## Connectivity and Integration

Integrates with the business applications in your datacenter using native interfaces. InfiniBox is bundled with a rich solution portfolio for platforms such as virtualization, databases, backup & recovery and more. Our fast and intuitive host connectivity and storage provisioning — Host PowerTools™ — shortens lengthy storage management tasks from days to seconds!

## InfiniBox Specifications

	F6000	F4000	F2000	F1000
<b>Capacity</b>				
Usable Capacity	1,035TB to 2,765TB	512TB to 1,024TB	248TB to 499TB	115TB
Effective Capacity*	2,070TB to 5,530TB	1,024TB to 2,048TB	496TB to 998TB	230TB
<b>Performance Features</b>				
Memory	Up to 3,072GB	Up to 1,152GB	Up to 768GB	Up to 384GB
Flash Cache	Up to 86TB	Up to 86TB	Up to 86TB	Up to 86TB
IOPS	1M IOPS	750,000 IOPS	500,000 IOPS	300,000 IOPS
Throughput	12.5 GB/Sec	10 GB/Sec	7 GB/Sec	3 GB/Sec
<b>Connectivity and Integration</b>				
FC Ports	24x 8Gbps			
Ethernet Ports	12x 10GbE			
Ecosystem Integration	VMware, OpenStack, CommVault, Veritas, Microsoft, SAP, Host PowerTools for Linux, UNIX, Windows			
<b>Availability and Protection</b>				
Fully Redundant Hardware	N+2 Redundant System Components Resilient Against Multiple Concurrent Failures Triple-Active Redundant Nodes			
Data Protection	Fastest Rebuild in the Industry In-Line and at-Rest Data-Verification Async Replication with Sub 4 Second RPO			
<b>Scalability</b>				
Max. Volume/File System Size	Unlimited			
Max. Files per Directory/File System	> 17B			
Max. Number of Volumes	Unlimited			
Max. Number of Snapshots	100,000			
Max. Number of File Systems	4,000			
Max. File Size	1PB			
<b>Support</b>	Three Years of 24 x 7 x 365 Maintenance — No Additional Cost			
<b>Pricing and Licensing</b>				
System Feature Licensing	All Features Included — No Additional Cost			

\*Effective capacity is dependent on compression ratios.

## InfiniBox Physical and Environmental Characteristics

	F6000	F4000	F2000	F1000
Power Consumption	8KW	5.5KW	3.5KW	2.5KW
Form Factor	Standard 19" 42U Rack	26U in a Standard 19" 42U Rack	18U in a Standard 19" 42U Rack	14U in a Standard 19" 42U Rack
Maximum Weight	1,200 kg (2,650 lb)	810 kg (1,790 lb)	580 kg (1,280 lb)	450 kg (990 lb)
Operating Temperature	10°C – 30°C (50°F – 85°F)			
Altitude (max)	3,050 m (10,000 ft)			
Humidity	25% – 80% non-condensing			
Service Clearance Front/Rear	120 cm / 45 cm (47.24 in / 17.8 in)			
Input Voltage	North America: Single-phase: 208V International: Single-phase: 220V		Three-phase: 208V between phases Three-phase: 380V between phases	
Input Current	North America: Single-phase: 4 inputs, 30A each Three-phase: 2 inputs, 3*30A each  International: Single-phase: 4 inputs, 32A each Three-phase: 2 inputs, 3*16A each		North America: Single-phase: 2 inputs, 30A each Three-phase: 2 inputs, 3*30A each  International: Single-phase: 2 inputs, 32A each Three-phase: 2 inputs, 3*16A each	
Input Power Frequency	50/60 HZ			
Cooling	27,500 BTU/Hour	18,800 BTU/Hour	12,000 BTU/Hour	8,500 BTU/Hour
Safety/EMC	Safety: EN 60950-1, CSA/UL 60950-1, IEC 60950-1 Ed 2 EMC: EN 55022 (CISPR 22), EN 55032 (CISPR 32), EN 55024 (CISPR 24), EN 61000-3-2, EN 61000-3-3, FCC Part 15, ICES-003 Issue 5			

# INFINIDAT

www.infinidat.com | info@infinidat.com

DS-INFBOX-161030-US | © INFINIDAT 2016



**For More Information:**  
(866) 787-3271  
Sales@PTSdcs.com